



Port Houston City of La Porte Presentation

Callie Barnes, Port Houston Director of Seaport Connectivity – 4/27/2026



HOUSTON SHIP CHANNEL: A FEDERAL WATERWAY



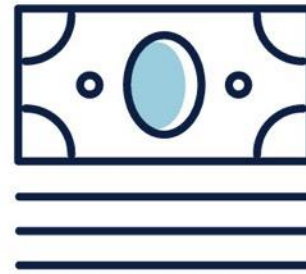
**1.54
MILLION**

JOBS IN TEXAS



**3.37
MILLION**

JOBS NATIONWIDE



**\$439
BILLION**

ECONOMIC IMPACT
IN TEXAS



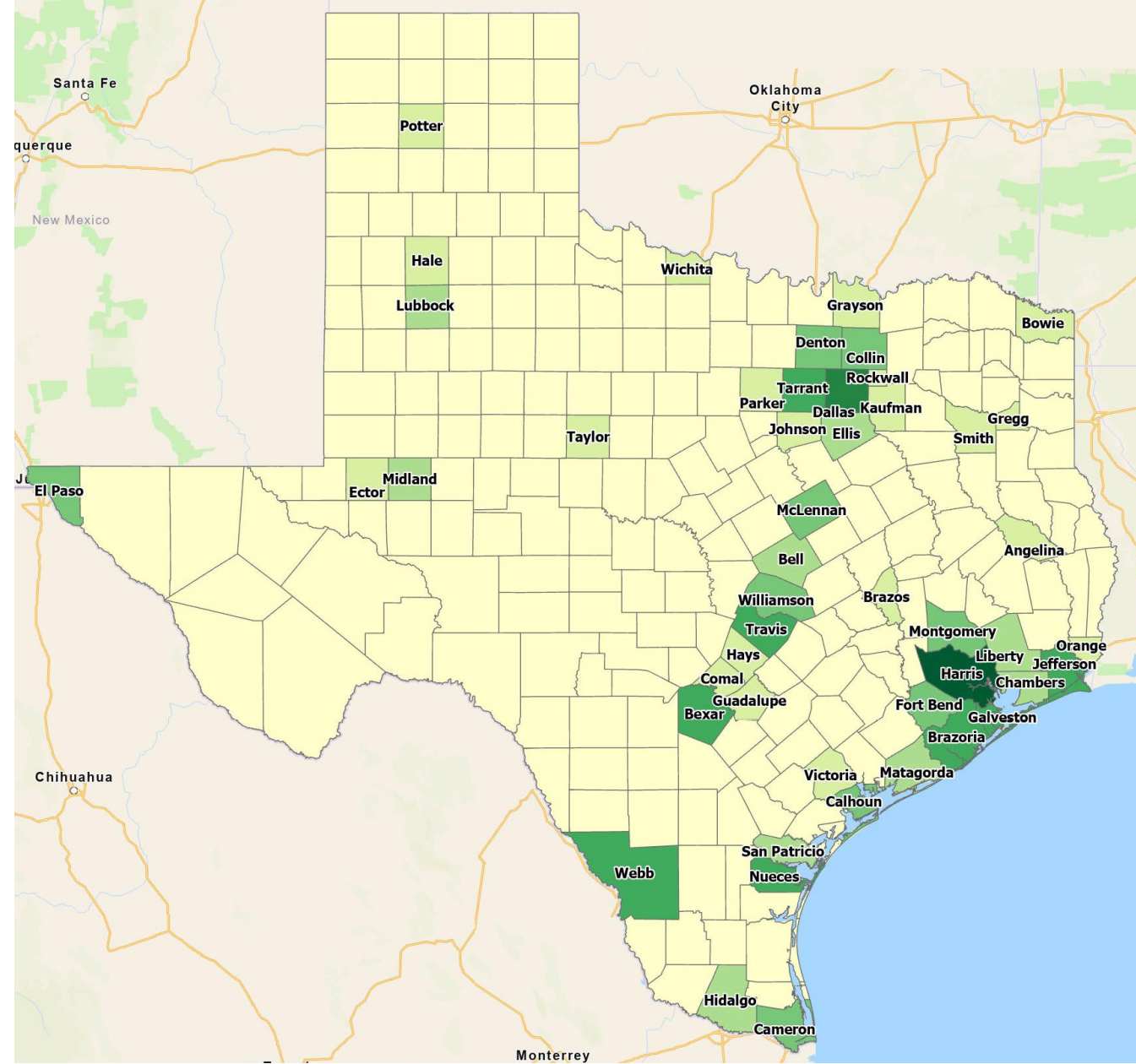
**\$906
BILLION**

ECONOMIC IMPACT
ACROSS THE U.S.

ECONOMIC IMPACT BY COUNTY

Legend - Texas Counties

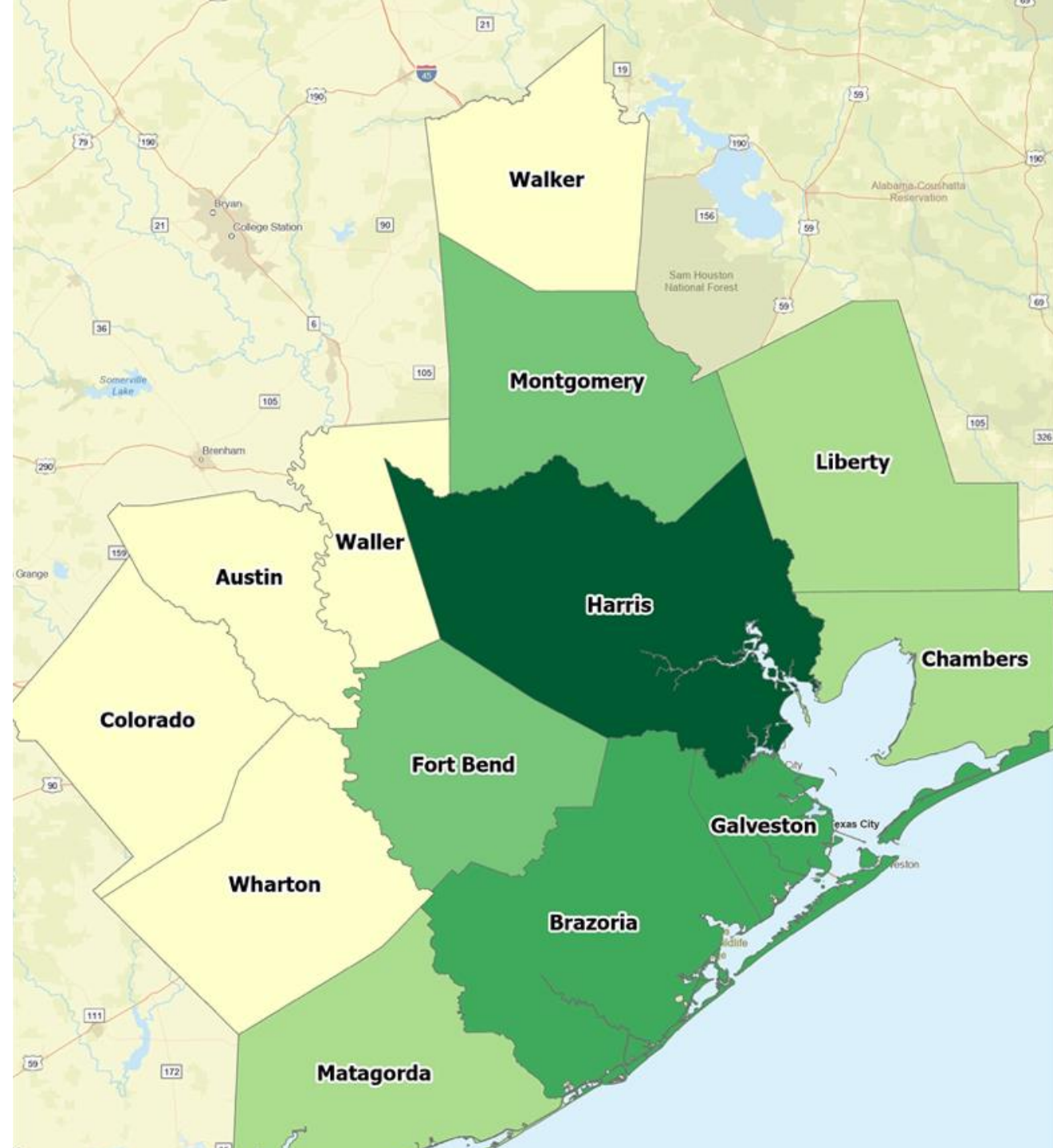
	Least Impact - \$0-\$ 610M
	\$610M- \$1.9B
	\$1.9B- \$3.1B
	\$3.1B- \$7.1B
	\$7.1B- 13.1B
	\$13.1B- \$26.8B
	Most Impact - \$204B



ECONOMIC IMPACT BY COUNTY

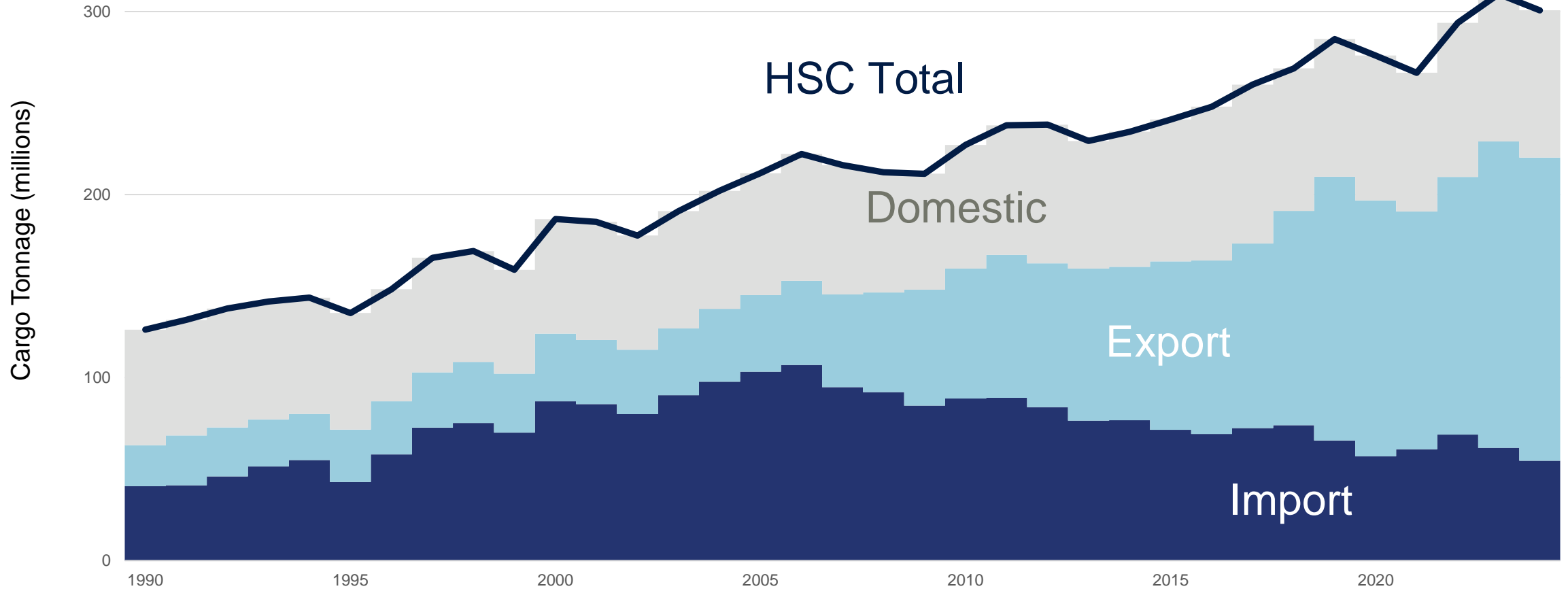
Legend - Texas Counties

	Least Impact - \$0-\$ 610M
	\$610M- \$1.9B
	\$1.9B- \$3.1B
	\$3.1B- \$7.1B
	\$7.1B- 13.1B
	\$13.1B- \$26.8B
	Most Impact - \$204B



HOUSTON SHIP CHANNEL TONNAGE

1990 - PRESENT



Note: 2024 tonnage is estimated
Source: PIERS

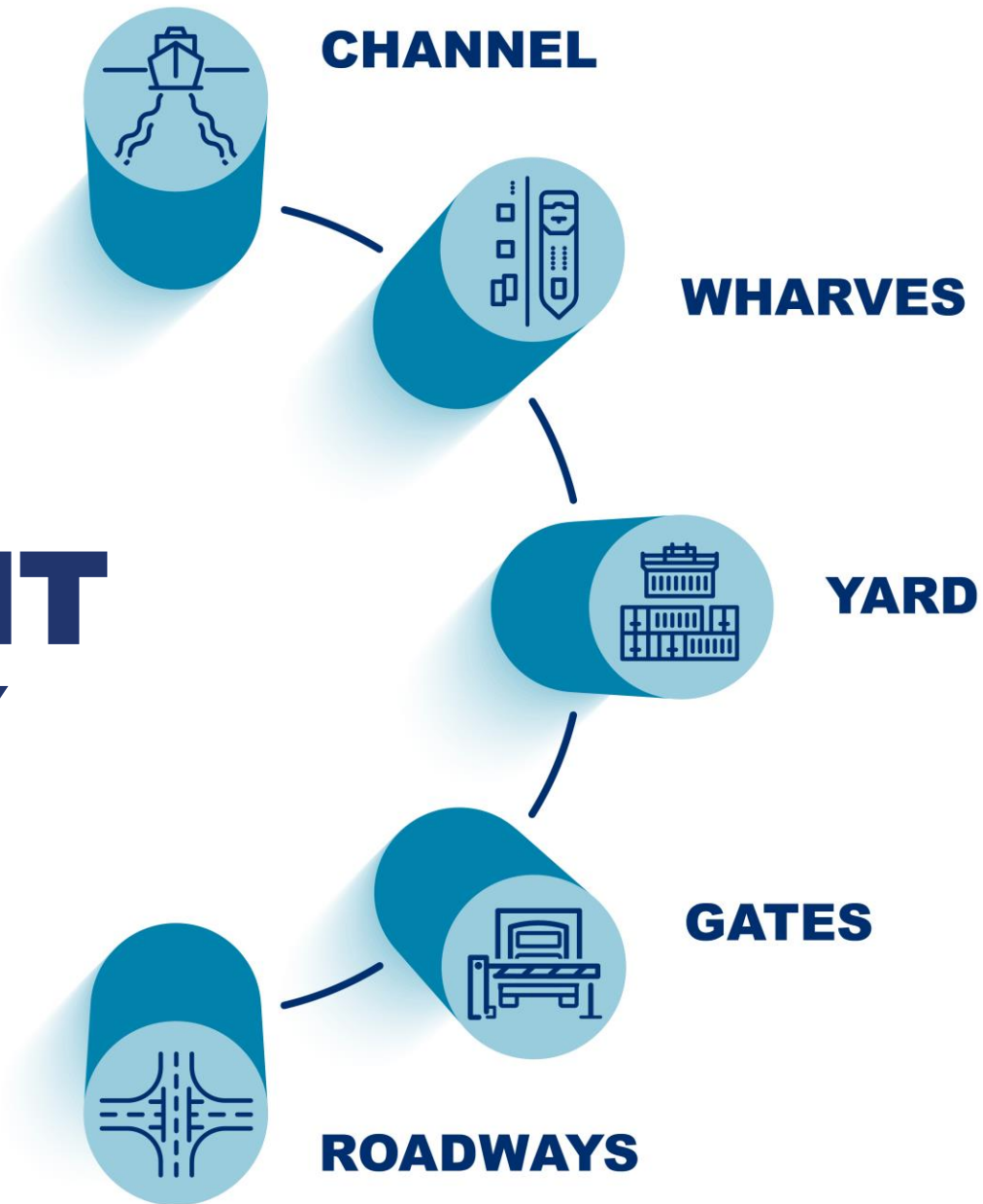
FASTEST GROWING PORT

2x
as fast as
#2!

Top 10 U.S. Container Port Rank by CAGR Total Loaded Container Volume in TEU

Rank – Growth Rate	Rank – Total TEUs	US Port Name	2015	2024	% Change	CAGR
		U.S. Container Total Loaded	32,907,196	40,367,971	23%	2.10%
1	5	Houston	1,766,378	3,313,879	88%	6.50%
2	4	Savannah	2,823,670	3,963,188	40%	3.40%
3	6	Norfolk	1,968,865	2,511,254	28%	2.50%
4	2	New York	4,536,845	5,592,007	23%	2.10%
5	1	Los Angeles	5,505,464	6,651,484	21%	1.90%
6	8	Charleston	1,558,974	1,838,163	18%	1.70%
7	3	Long Beach	4,921,408	5,475,589	11%	1.10%
8	10	Jacksonville	755,430	807,051	7%	0.70%
9	9	Oakland	1,526,419	1,579,929	4%	0.30%
10	7	Seatac	2,161,176	1,929,982	-11%	-1.10%

5 PILLARS FOR FREIGHT EFFICIENCY



PREPARING FOR THE FUTURE - ROADWAYS

Roadways are a critical link

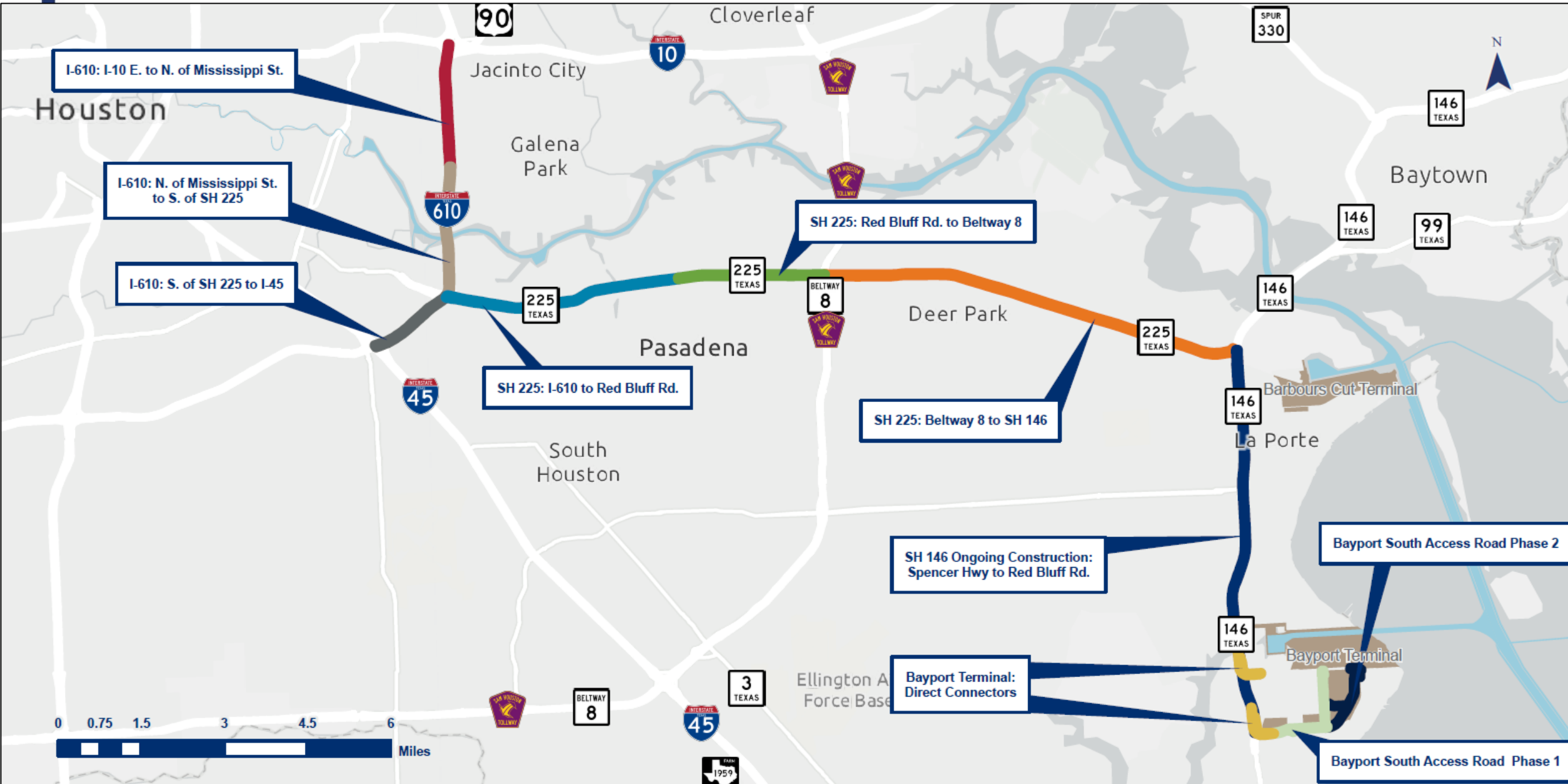
- Nearly 99% of TEUs moved via truck
- Forecasting nearly double TEUs within next decade

Port Houston, TxDOT, H-GAC, and others must work together on key regional projects

- Accelerate Construction of SH 146 Widening
- Initiate All Segments of SH 225/I-610E Project
- Secure Funding for Bayport South Access Road Phases 2 and 3
- Prioritize and Begin Planning for Phase SH 146 Direct Connectors at Terminals



Port Houston – Roadway Priorities



SH 225 Planning and Environmental Linkages (PEL) - 2024

- **Safety Issues**

- Crash Rates Substantially Higher Than State-Wide Average

- **Inadequate Multimodal Movement of People**

- 52% Population Increase by 2045 in Study Area

- **Inefficient Movement of Freight and Maritime Cargo**

- All Major Roadways Designated part of the Primary Highway Freight System (PHFS)
- Listed as Part of the Top 100 Most Congested Truck Roadways in Texas

- **Inefficient Emergency Evacuation**

- 4 Emergency Evacuation Routes in Study Area

- **Aging Infrastructure**

- Majority of Roadways within Study Area Were Built Over 50 Years Ago
- Design and Drainage Do Not Meet Current Standard

SH 225 PEL

PUBLIC ENGAGEMENT



49
Attendees

Virtual Stakeholder & Agency Workshop #4
March 2023

Community Meetings

May to August 2023

Deer Park Community Advisory Council
Houston Community Advisory Panel
Economic Alliance, Houston Port Region
Super Neighborhood 65 & 82
Super Neighborhood 57 & 59
Citizen's Advisory Council to La Porte Industry
Galena Park-Jacinto City Community-Industry Partnership
Pasadena Citizens Advisory Council³

7 Meetings



258
Attendees

Live Poll



158
Participants



25
Attendees

Virtual Stakeholder & Agency Workshop #5
September 2023

Public Meeting #2

October 2023

2 in-person
Open Houses



70
Attendees

1 Virtual

382
Attendees



20
Comments



34
Attendees

Virtual Stakeholder & Agency Workshop #6
November 2023

PEL Recommendation

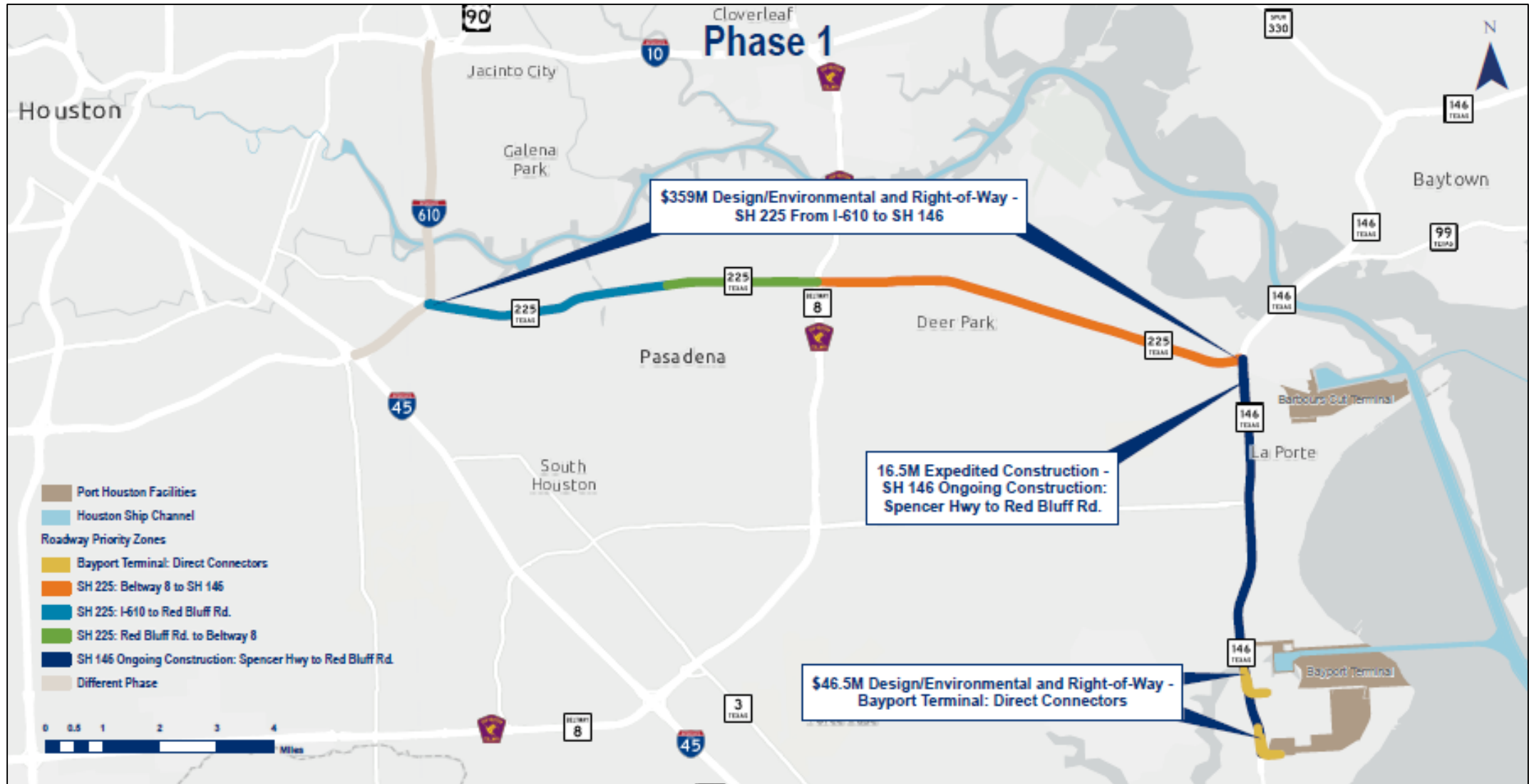
SH 225



I-610E



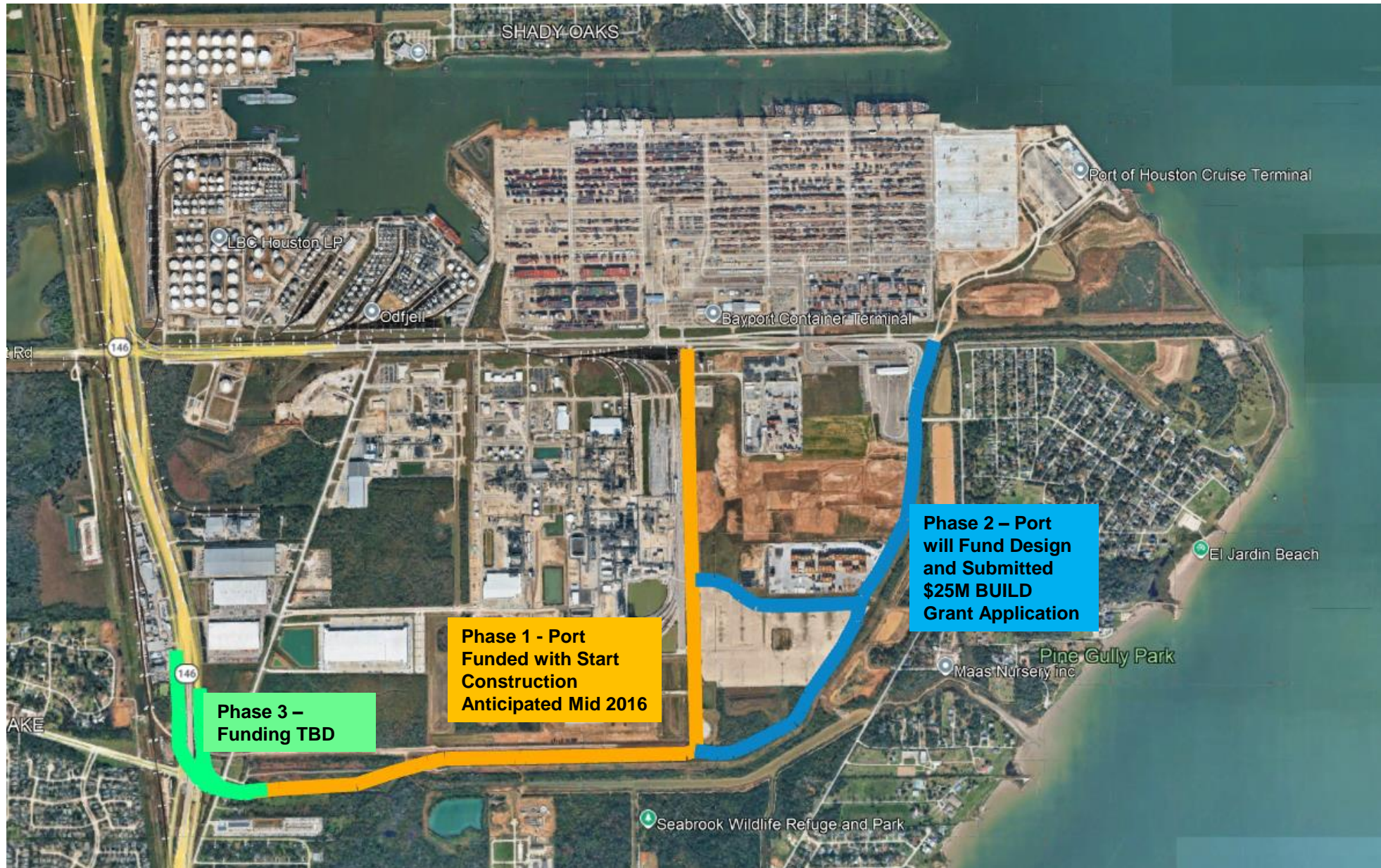
Phase 1 - Immediate need for ~\$450M



Phase 2 - Near-term need of ~\$2.5B



BSAR Phase 2 BUILD Grant Application – \$32.5M

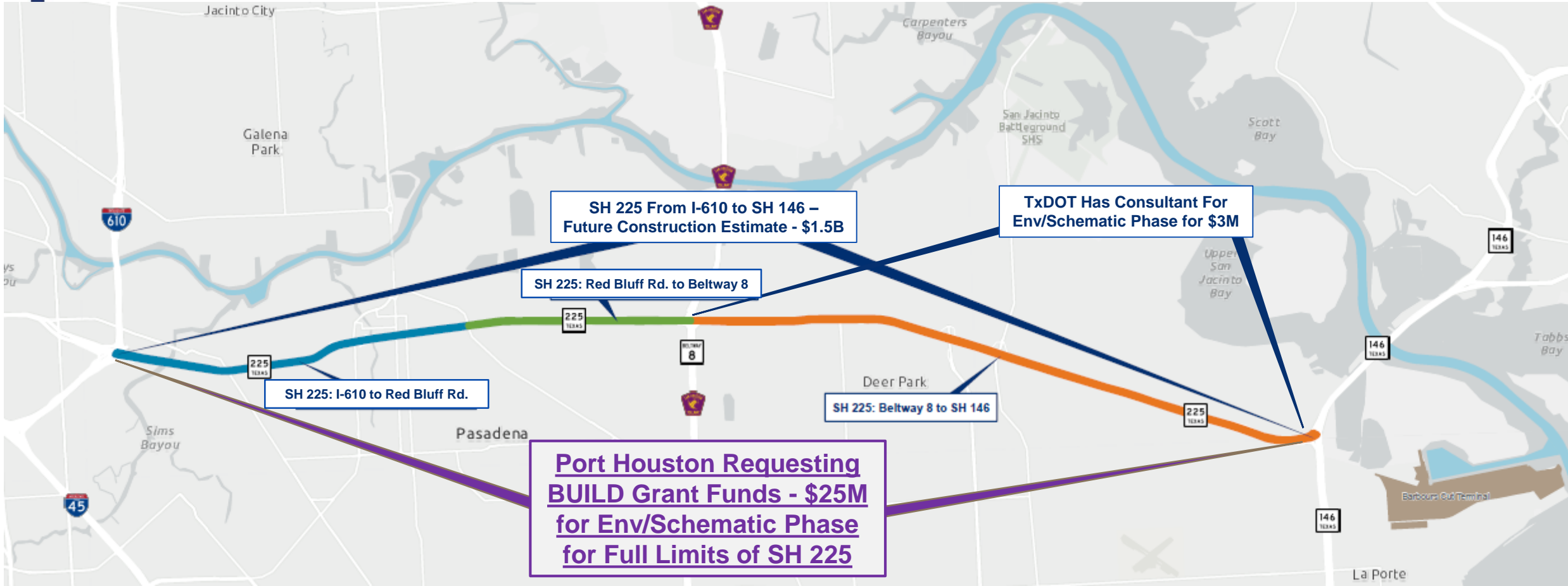


Phase 3 –
Funding TBD

Phase 1 - Port
Funded with Start
Construction
Anticipated Mid 2016

Phase 2 – Port
will Fund Design
and Submitted
\$25M BUILD
Grant Application

SH 225 BUILD Grant Application – \$32.5M



Examples of Recent Roadway Advocacy Efforts

- Responded to the Request for Information (RFI) for Surface Transportation Reauthorization Bill
- Prepared Interim Charge for Speaker Burrows of Texas House
- Coordination with Texas Department of Transportation (TxDOT) and Governing Body, Texas Transportation Commission (Letter and Public Comments)
- Partnering with TxDOT Houston District
- Greater Houston Partnership (GHP) Policy Reform Workgroup (Standardizing Permitting and Expediting Economic Development [SPEED] Act) as well as Transportation and Infrastructure Committee
- Coordination with Houston-Galveston Area Council (H-GAC)
- Active with Economic Alliance Houston Port Region and Bay Area Houston Economic Partnership
- Partnering with Transportation Advocacy Group (TAG), Bay Area Houston Transportation Partnership (BayTran) and Transportation Advocates of Texas (TAOT)



www.porthouston.com

THANK YOU

