



# Port Houston City of La Porte Presentation

*Callie Barnes, Port Houston Director of Seaport Connectivity – 4/27/2026*



# HOUSTON SHIP CHANNEL: A FEDERAL WATERWAY



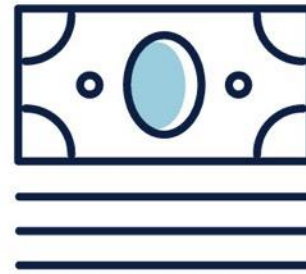
**1.54  
MILLION**

JOBS IN TEXAS



**3.37  
MILLION**

JOBS NATIONWIDE



**\$439  
BILLION**

ECONOMIC IMPACT  
IN TEXAS



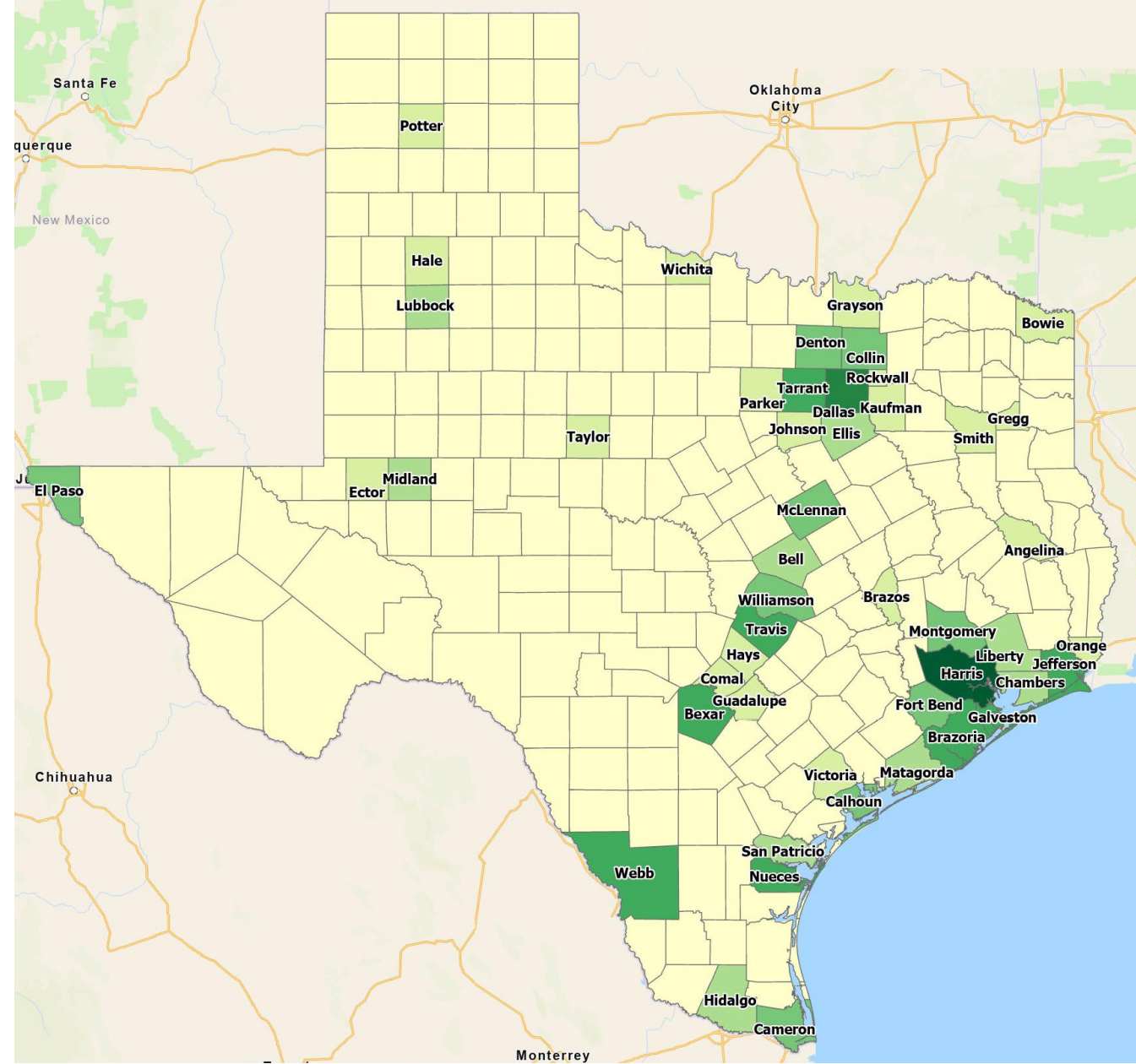
**\$906  
BILLION**

ECONOMIC IMPACT  
ACROSS THE U.S.

# ECONOMIC IMPACT BY COUNTY

## Legend - Texas Counties

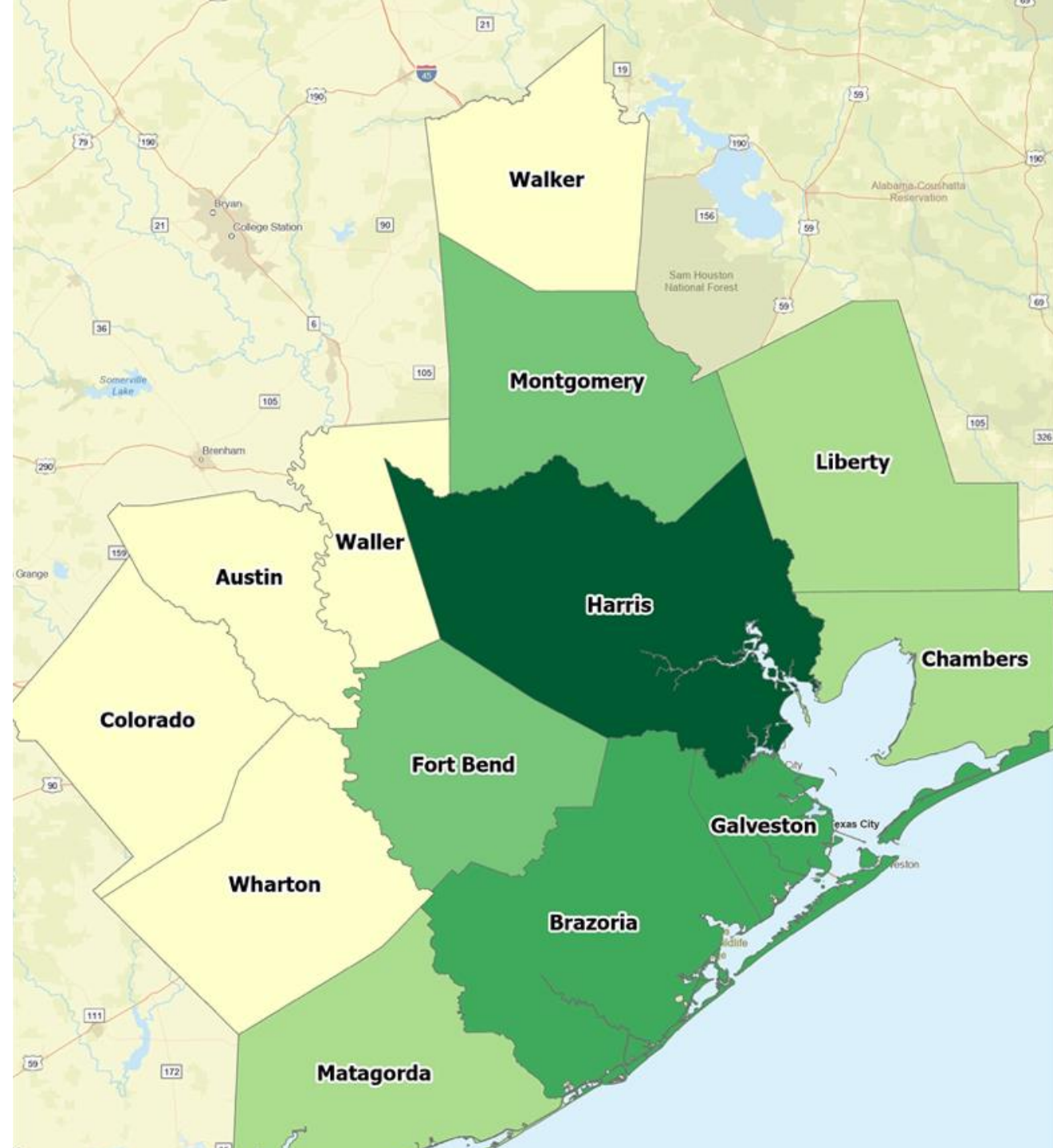
	Least Impact - \$0-\$ 610M
	\$610M- \$1.9B
	\$1.9B- \$3.1B
	\$3.1B- \$7.1B
	\$7.1B- 13.1B
	\$13.1B- \$26.8B
	Most Impact - \$204B



# ECONOMIC IMPACT BY COUNTY

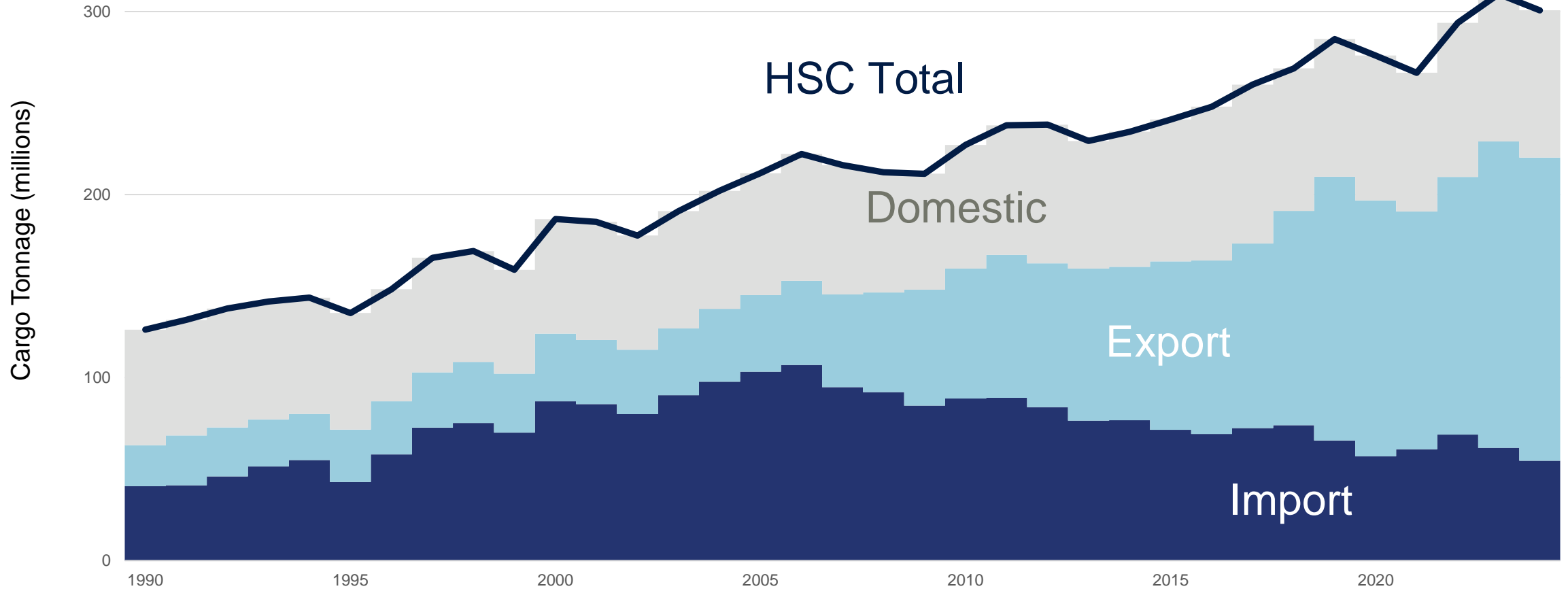
## Legend - Texas Counties

	Least Impact - \$0-\$ 610M
	\$610M- \$1.9B
	\$1.9B- \$3.1B
	\$3.1B- \$7.1B
	\$7.1B- 13.1B
	\$13.1B- \$26.8B
	Most Impact - \$204B



# HOUSTON SHIP CHANNEL TONNAGE

## 1990 - PRESENT



Note: 2024 tonnage is estimated  
Source: PIERS

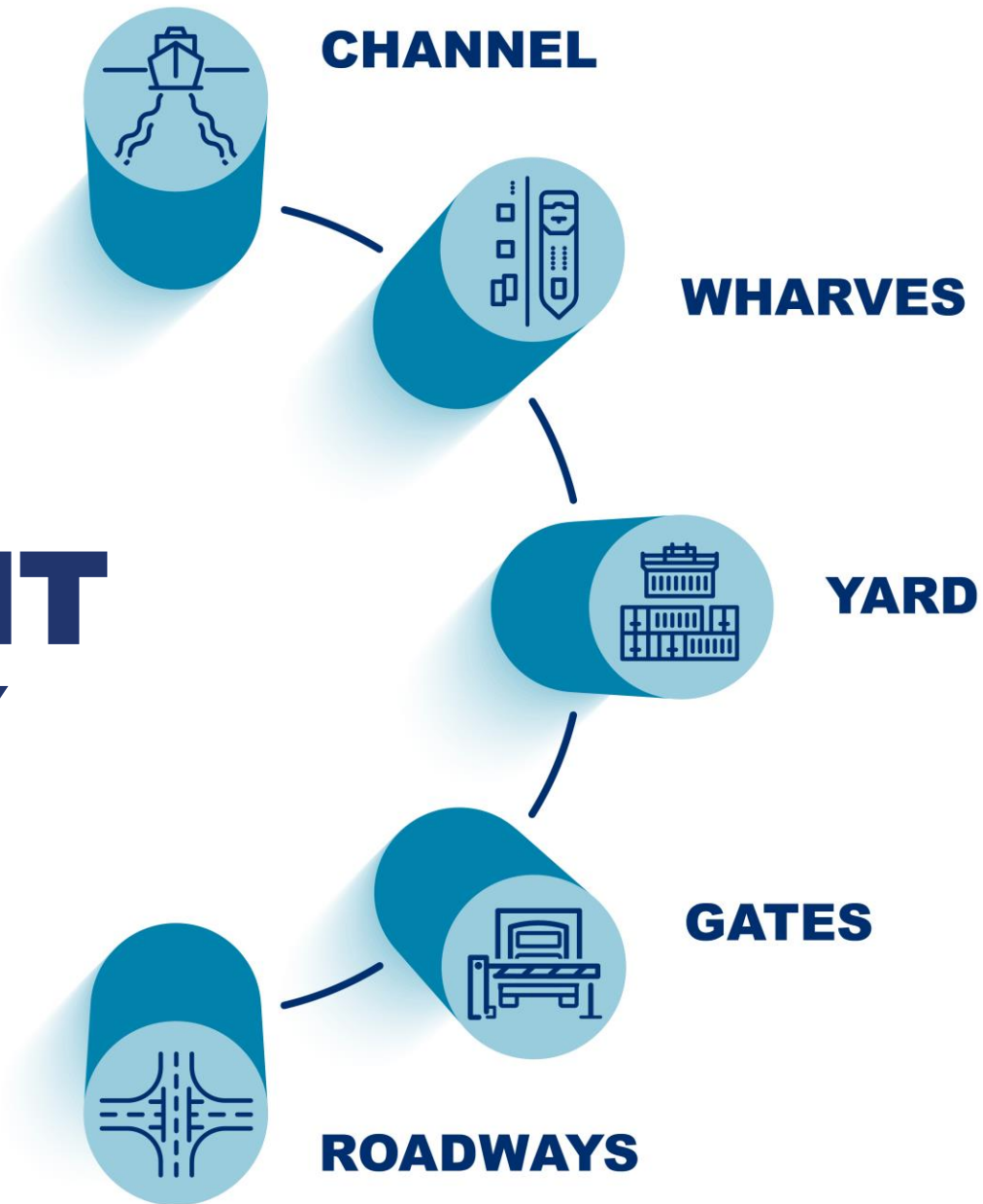
# FASTEST GROWING PORT

**2x**  
as fast as  
**#2!**

## Top 10 U.S. Container Port Rank by CAGR Total Loaded Container Volume in TEU

Rank – Growth Rate	Rank – Total TEUs	US Port Name	2015	2024	% Change	CAGR
		U.S. Container Total Loaded	32,907,196	40,367,971	23%	2.10%
1	5	Houston	1,766,378	3,313,879	88%	6.50%
2	4	Savannah	2,823,670	3,963,188	40%	3.40%
3	6	Norfolk	1,968,865	2,511,254	28%	2.50%
4	2	New York	4,536,845	5,592,007	23%	2.10%
5	1	Los Angeles	5,505,464	6,651,484	21%	1.90%
6	8	Charleston	1,558,974	1,838,163	18%	1.70%
7	3	Long Beach	4,921,408	5,475,589	11%	1.10%
8	10	Jacksonville	755,430	807,051	7%	0.70%
9	9	Oakland	1,526,419	1,579,929	4%	0.30%
10	7	Seatac	2,161,176	1,929,982	-11%	-1.10%

# 5 PILLARS FOR FREIGHT EFFICIENCY



# PREPARING FOR THE FUTURE - ROADWAYS

## Roadways are a critical link

- Nearly 99% of TEUs moved via truck
- Forecasting nearly double TEUs within next decade

## Port Houston, TxDOT, H-GAC, and others must work together on key regional projects

- Accelerate Construction of SH 146 Widening
- Initiate All Segments of SH 225/I-610E Project
- Secure Funding for Bayport South Access Road Phases 2 and 3
- Prioritize and Begin Planning for Phase SH 146 Direct Connectors at Terminals



# Port Houston – Roadway Priorities



# SH 225 Planning and Environmental Linkages (PEL) - 2024

- **Safety Issues**

- Crash Rates Substantially Higher Than State-Wide Average

- **Inadequate Multimodal Movement of People**

- 52% Population Increase by 2045 in Study Area

- **Inefficient Movement of Freight and Maritime Cargo**

- All Major Roadways Designated part of the Primary Highway Freight System (PHFS)
- Listed as Part of the Top 100 Most Congested Truck Roadways in Texas

- **Inefficient Emergency Evacuation**

- 4 Emergency Evacuation Routes in Study Area

- **Aging Infrastructure**

- Majority of Roadways within Study Area Were Built Over 50 Years Ago
- Design and Drainage Do Not Meet Current Standard

# SH 225 PEL

## PUBLIC ENGAGEMENT



**49**  
Attendees

Virtual Stakeholder & Agency Workshop #4  
March 2023

### Community Meetings

May to August 2023

Deer Park Community Advisory Council  
Houston Community Advisory Panel  
Economic Alliance, Houston Port Region  
Super Neighborhood 65 & 82  
Super Neighborhood 57 & 59  
Citizen's Advisory Council to La Porte Industry  
Galena Park-Jacinto City Community-Industry Partnership  
Pasadena Citizens Advisory Council<sup>3</sup>

7 Meetings



**258**  
Attendees

Live Poll



**158**  
Participants



**25**  
Attendees

Virtual Stakeholder & Agency Workshop #5  
September 2023

### Public Meeting #2

October 2023

2 in-person  
Open Houses



**70**  
Attendees

1 Virtual

**382**  
Attendees



**20**  
Comments



**34**  
Attendees

Virtual Stakeholder & Agency Workshop #6  
November 2023

## PEL Recommendation

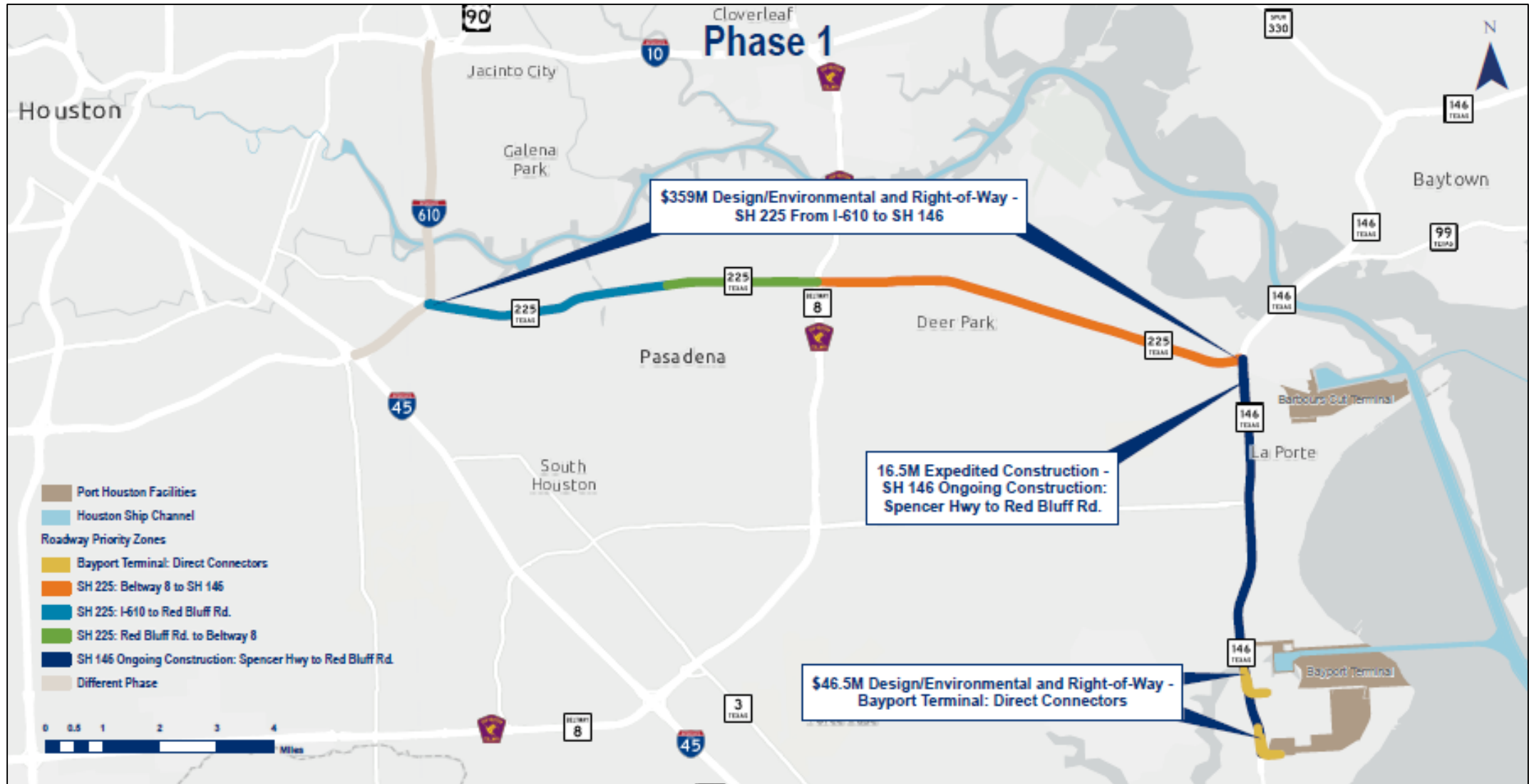
### SH 225



### I-610E



# Phase 1 - Immediate need for ~\$450M



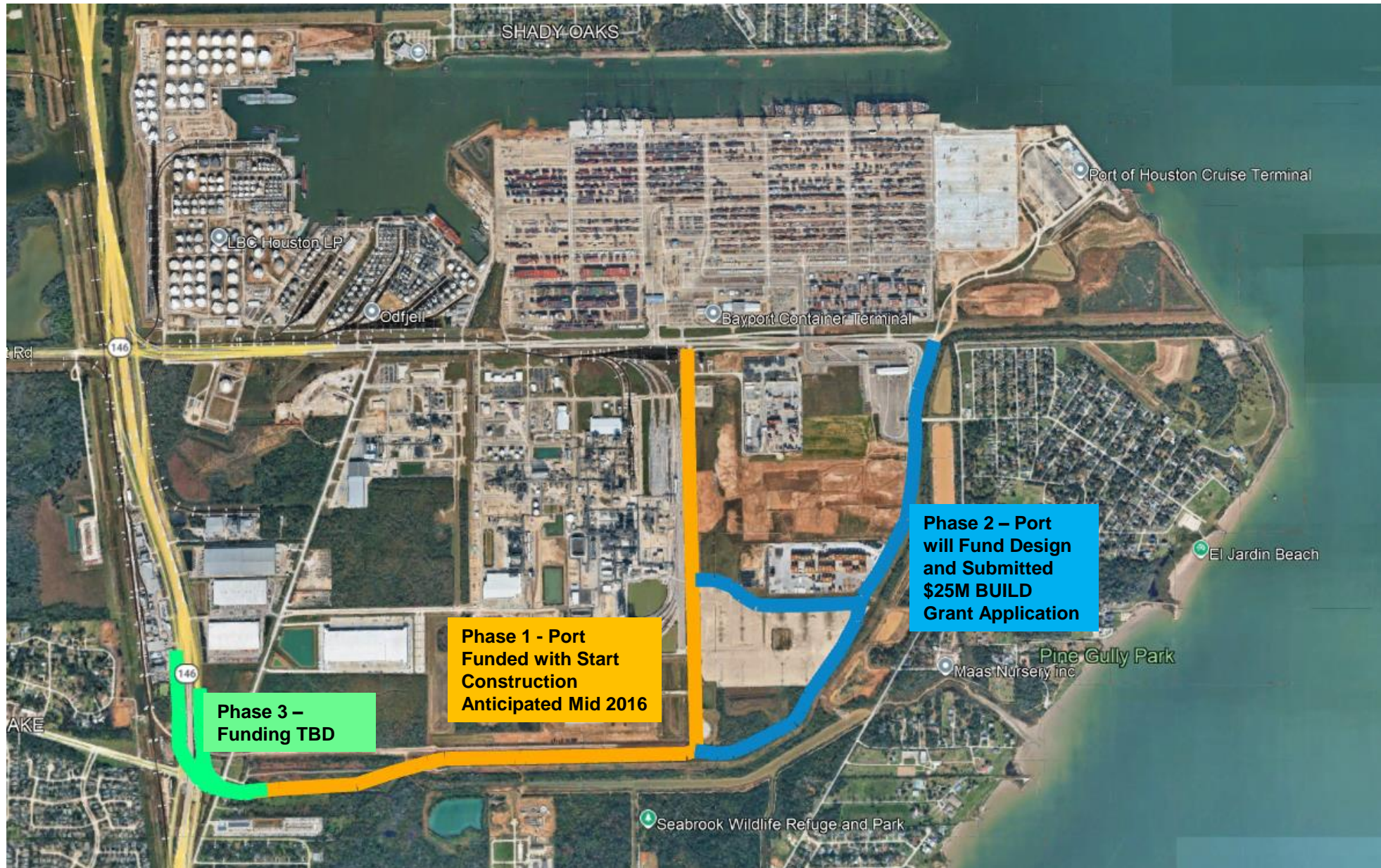
# Phase 2 - Near-term need of ~\$2.5B



# Phase 3 - ~\$4B



# BSAR Phase 2 BUILD Grant Application – \$32.5M

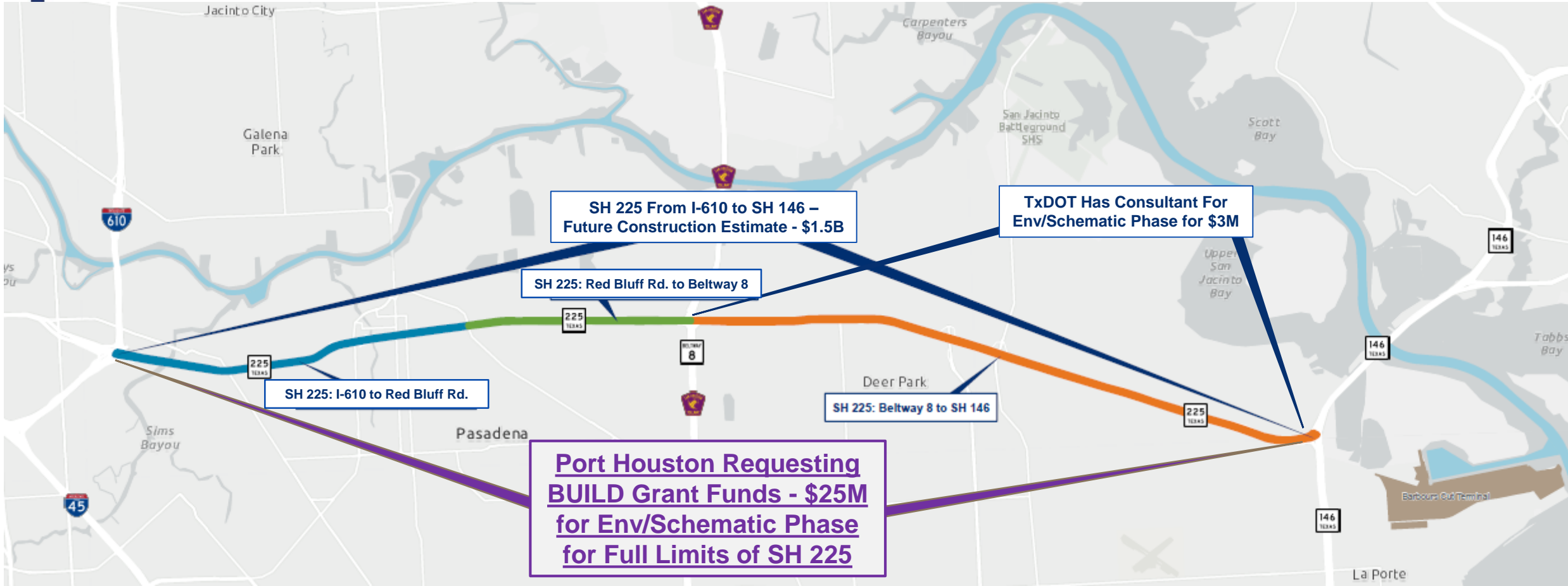


**Phase 1 - Port  
Funded with Start  
Construction  
Anticipated Mid 2016**

**Phase 2 – Port  
will Fund Design  
and Submitted  
\$25M BUILD  
Grant Application**

**Phase 3 –  
Funding TBD**

# SH 225 BUILD Grant Application – \$32.5M



# Examples of Recent Roadway Advocacy Efforts

- Responded to the Request for Information (RFI) for Surface Transportation Reauthorization Bill
- Prepared Interim Charge for Speaker Burrows of Texas House
- Coordination with Texas Department of Transportation (TxDOT) and Governing Body, Texas Transportation Commission (Letter and Public Comments)
- Partnering with TxDOT Houston District
- Greater Houston Partnership (GHP) Policy Reform Workgroup (Standardizing Permitting and Expediting Economic Development [SPEED] Act) as well as Transportation and Infrastructure Committee
- Coordination with Houston-Galveston Area Council (H-GAC)
- Active with Economic Alliance Houston Port Region and Bay Area Houston Economic Partnership
- Partnering with Transportation Advocacy Group (TAG), Bay Area Houston Transportation Partnership (BayTran) and Transportation Advocates of Texas (TAOT)



[www.porthouston.com](http://www.porthouston.com)

**THANK YOU**

