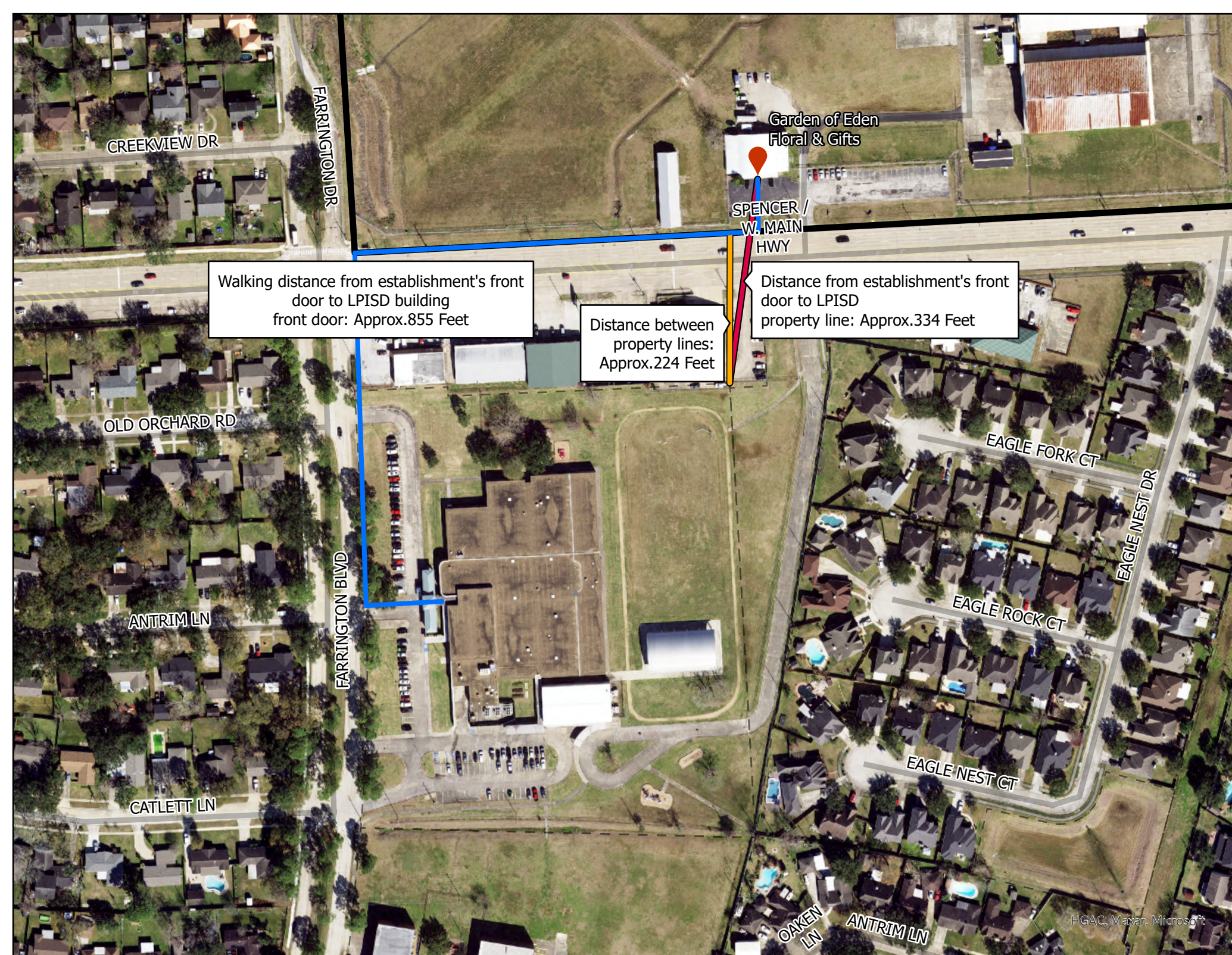


Aerial Map

Garden of Eden Floral & Gifts at
10515 Spencer Highway



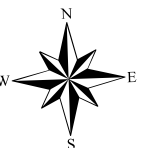
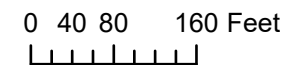
Walking distance from establishment's front door to LPISD building front door: Approx. 855 Feet

Distance between property lines: Approx. 224 Feet

Distance from establishment's front door to LPISD property line: Approx. 334 Feet



This product is for informational purposes only and may not have been prepared for or be suitable for legal purposes. It does not represent an on-the-ground survey and represents only the approximate relative location of the property boundaries



HGAC, Maxar, Microsoft