



SH146 Spencer Hwy to Red Bluff Rd

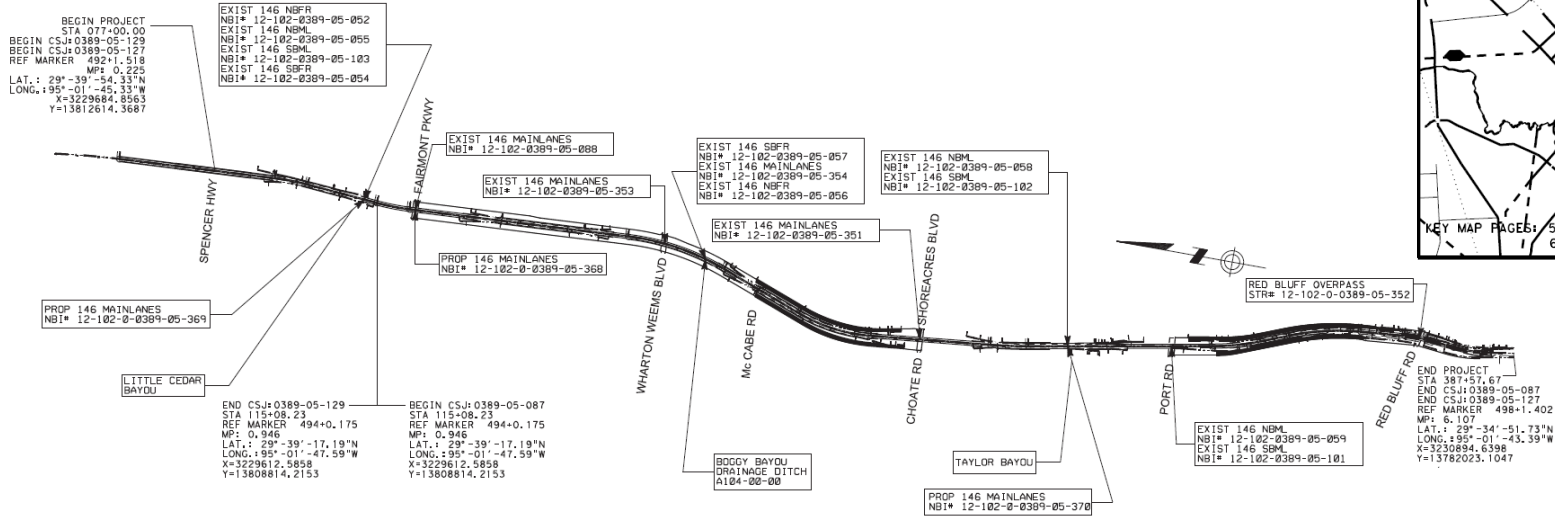
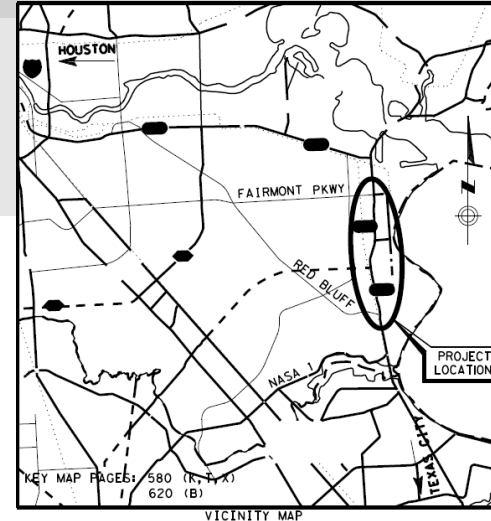
CSJ:0389-05-087

Presented by
Jamal Elahi, P.E.
Southeast Harris Area Engineer

Project Location



- Begins at Spencer Highway, ends just south of Red Bluff Road



PROJECT LAYOUT



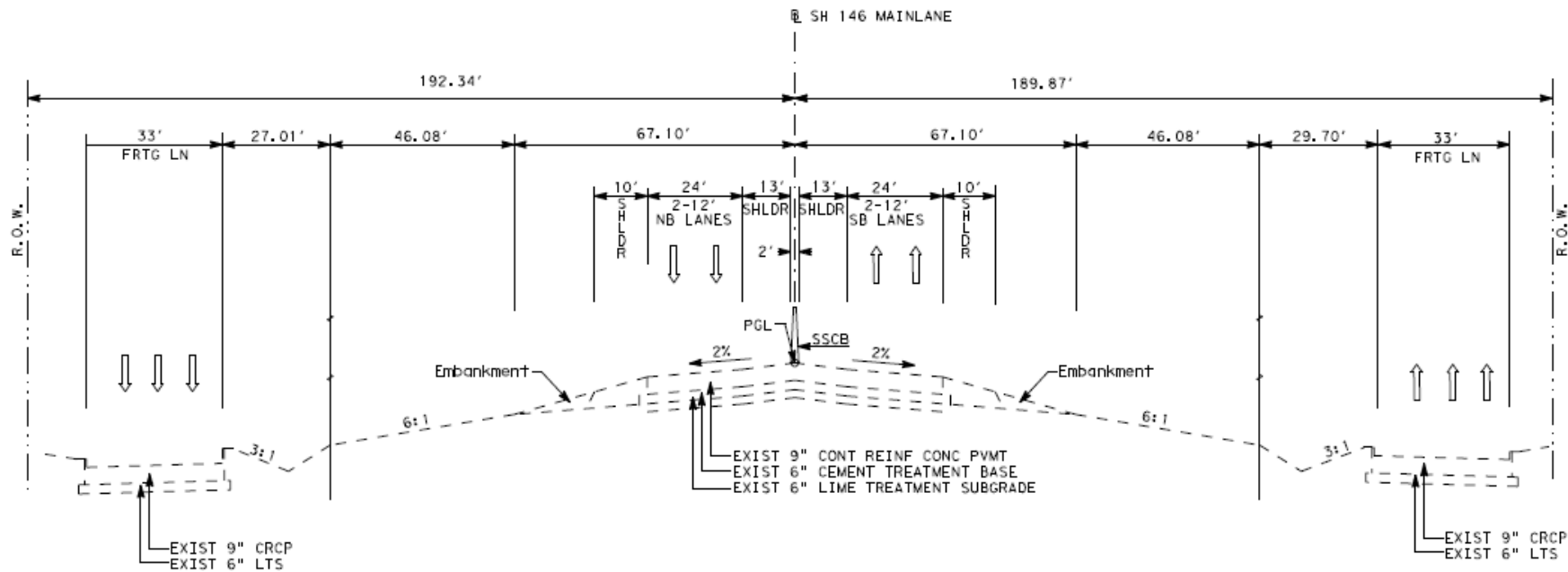
Project Summary



- Length of Project is 5.8 miles.
- Widens facility to 6 lanes with 2 2-lane frontage roads.
- Widens grade separated overpasses at:
 - Red Bluff Rd.
 - Shore acres Blvd.
 - Wharton Weems Blvd.
- Full replacement of structures at:
 - Fairmont Parkway
 - Little Cedar Bayou
 - Taylor Bayou
- Constructs new frontage roads:
 - Red Bluff Rd. to Port Rd. Northbound
 - McCabe Rd. to Shore acres Blvd. Northbound and Southbound
- Project Duration : 4 years



Existing Configuration



EXISTING TYPICAL SECTION

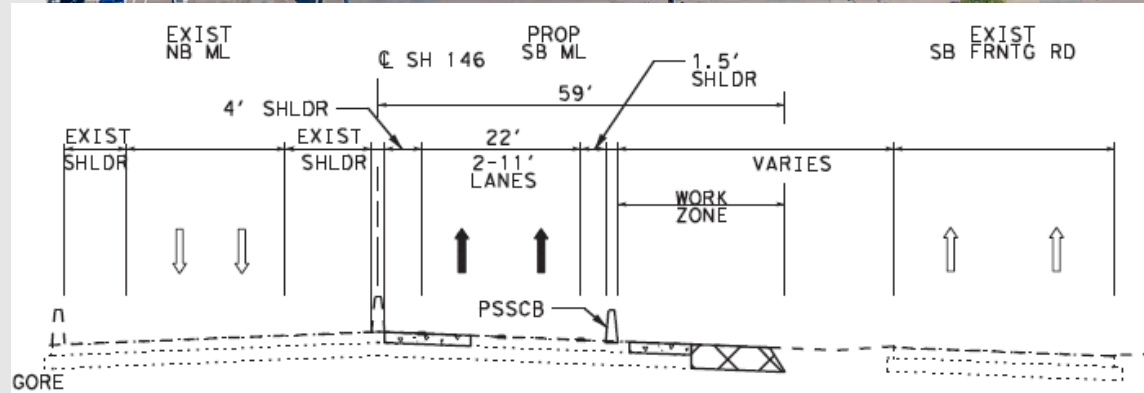
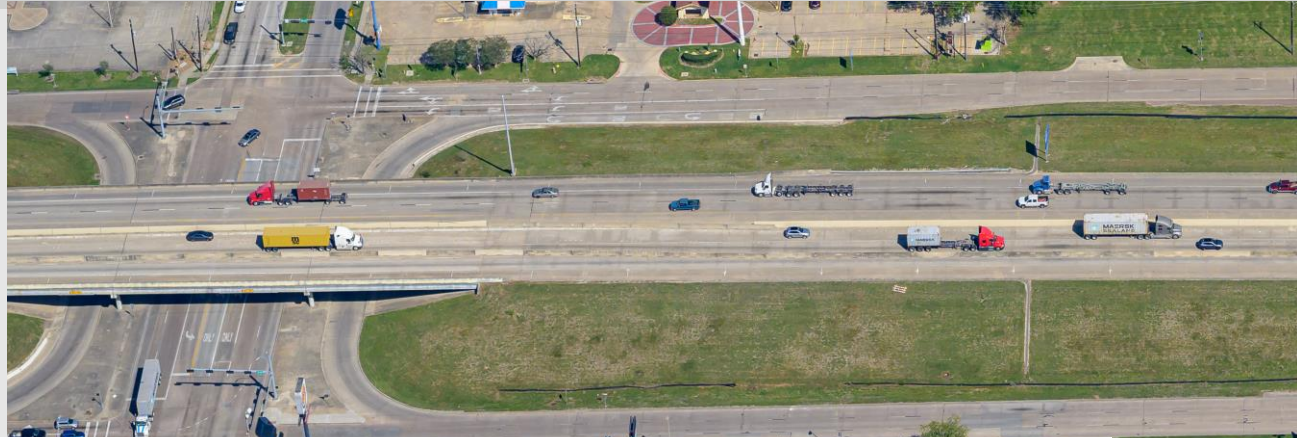
STA 138+00.00 - STA 168+00.00

Current Phasing



During Phase 1 Step 1

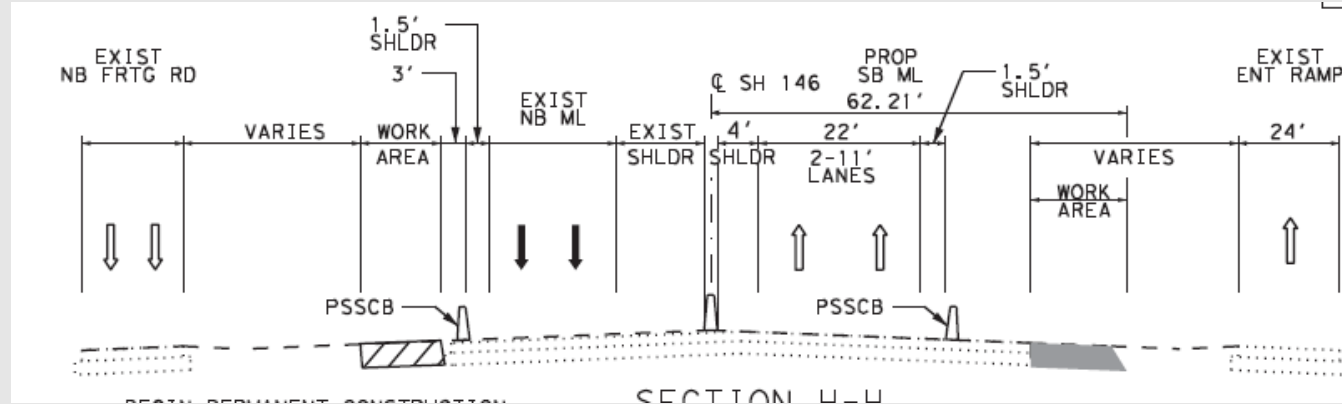
- The southbound lanes will be temporarily widened.
- Northbound lanes are not impacted.
- Southbound maintains two lanes for the entire length of the project. (No loss of capacity)
- Shoulder width on Southbound lanes has been reduced.
- Anticipated this phase will last 6 to 8 months (May '24)





During Phase 1 Step 2

- The southbound lanes will be temporally widened.
- Number of Northbound lanes are not reduced.
- Small reduction of NB outside shoulder at Red Bluff, Shore Acres, and Wharton Weems
- Southbound maintains two lanes for the entire length of the project.
- Shoulder width on Southbound lanes will remain the same as Phase 1 Step 1.
- Anticipated this phase will last 6 to 8 months (Spring '24 to Late Fall '24)





Five Contractual Milestones

- Incentivize the Contractor for early completion.
- All involve closures or impacts to the Port Rd Connectors.
- Milestone are not anticipated to begin until Summer '25.

Milestone	Begin	End	Working Day Allowed	Incentives/Disincentives per Working Day	Maximum Days for Incentives	Maximum Amount for Incentives
Milestone 1	Phase 2-Step 5A	Completion of Phase 2 Step 5A	120	\$80,000	15	\$1,200,000
Milestone 2	Phase 2-Step 5B	Completion of Phase 2 Step 5B	6	\$13,750	3	\$41,250
Milestone 3	Phase 3-Step 1A	Completion of Phase 3 Step 1A	6	\$4,000	2	\$8,000
Milestone 4	Phase 3-Step 1B	Completion of Phase 3 Step 1B	120	\$5,000	20	\$100,000
Milestone 5	Phase 3-Step 1C	Completion of Phase 3 Step 1C	6	\$4,000	2	\$8,000